

Snohomish River Estuary Qwulooft Restoration Project

WHY ARE WE DOING THE PROJECT?

The purpose of the project is to restore the natural resources of the Qwulooft Marsh to historic conditions. These resources were lost when the estuary was diked and cut off from the natural influences of the river and tides.

WHAT IS THE PROJECT?

The project will restore historic tidal flows to the estuary and allow natural processes to occur, such as:

- ▶ Natural channel formation
- ▶ Native vegetation growth
- ▶ Fish and wildlife habitat formation
- ▶ Water quality maintenance

HOW WILL THIS BE DONE?

Possible actions to restore the Qwulooft Marsh include:

- ▶ Levee breaches
- ▶ Levee removal
- ▶ Allen and Jones Creek Channel relocation
- ▶ Tide gate removal
- ▶ Native vegetation planting
- ▶ Flood protection maintenance

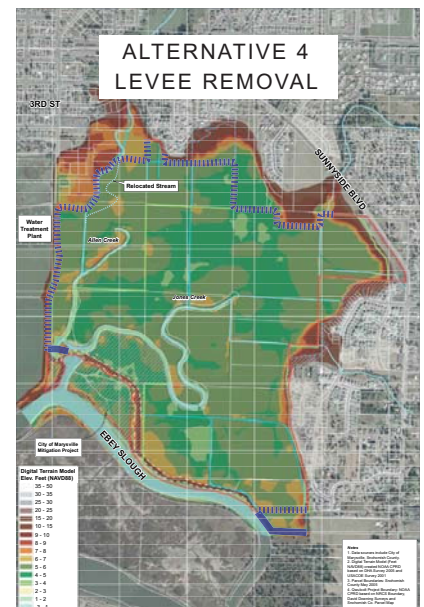
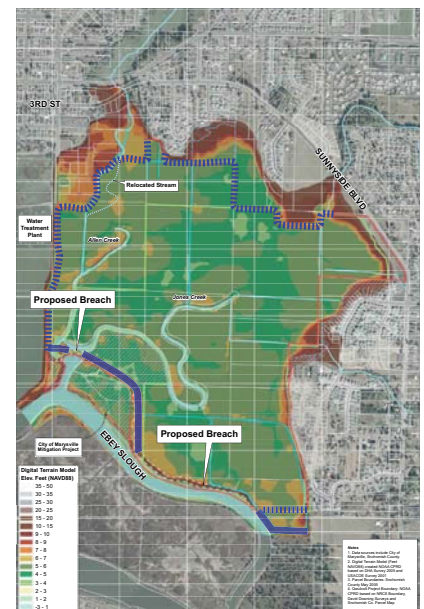
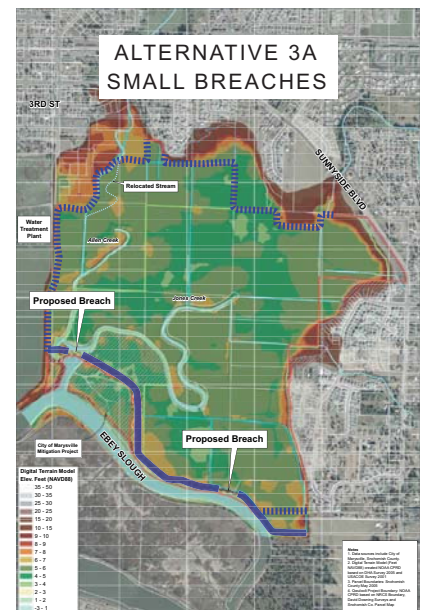


CURRENT CONDITIONS



LONG TERM RESTORATION

ACTION ALTERNATIVES:



CONTACT INFORMATION:

For more information visit: <http://www.tulalip.nsn.us/~qwulooft>

Or contact Kurt Nelson (360) 651-4485 or Maria Calvi (360) 651-4264 at Tulalip Tribes Natural Resources, 7515 Totem Beach Road, Tulalip, WA 98271

